

**PRODUCT INGREDIENT SHEET
CHOCOLATE COVERED MINTS, SKU 0050**

INGREDIENTS: SUGAR, DARK CHOCOLATE (SUGAR, CHOCOLATE [PROCESSED WITH ALKALI], COCOA BUTTER, MILK FAT, SOYA LECITHIN-AN EMULSIFIER, VANILLIN-AN ARTIFICIAL FLAVOR), WATER, COCOA, COCOA (PROCESSED WITH ALKALI), PARTIALLY HYDROGENATED VEGETABLE OIL (COTTONSEED OIL, AND/OR SOYBEAN OIL), EGG WHITES, POTATO STARCH, WHEAT STARCH, CORN STARCH, DEXTRIN, INVERTASE, OIL OF PEPPERMINT, MONO AND DIGLYCERIDES – AN EMULSIFIER, GLYCERINE.
MANUFACTURED BY THE NEW CHERRYDALE, ALLENTOWN, PA 18106 USA

NET WEIGHT 6 oz (170 g)



Allergy Information: Manufactured In A Facility That Processes Peanuts/Nuts, Wheat, Milk, And Egg Products. May Contain Traces Of Milk, Egg, Wheat, And/Or Nuts Including Peanuts.



Nutrition Facts

Serving Size 3 Pieces (43g)
Servings Per Container 4

Amount Per Serving

Calories 190 **Calories from Fat 80**

% Daily Value*

Total Fat 9g **14%**

 Saturated Fat 5g **25%**

 Trans Fat 0g

Cholesterol 0mg **0%**

Sodium 0mg **0%**

Total Carbohydrate 31g **10%**

 Dietary Fiber 2g **8%**

 Sugars 26g

Protein 1g

Vitamin A 0% • Vitamin C 0%

Calcium 2% • Iron 8%

*Percent Daily Values are based on a 2,000 calorie diet. Your daily values may be higher or lower depending on your calorie needs:

		Calories	2,000	2,500
Total Fat	Less Than	65g	80g	
Saturated Fat	Less Than	20g	25g	
Cholesterol	Less Than	300mg	300 mg	
Sodium	Less Than	2,400mg	2,400mg	
Total Carbohydrate		300g	375g	
Dietary Fiber		25g	30g	

Calories per gram:

Fat 9 • Carbohydrate 4 • Protein 4

PRODUCT INGREDIENT SHEET
PECAN PATTIES, SKU 0053

INGREDIENTS: MILK CHOCOLATE (SUGAR, MILK, CHOCOLATE, COCOA BUTTER, SOYA LECITHIN AN EMULSIFIER, VANILLIN AN ARTIFICIAL FLAVOR), PECANS, CORN SYRUP, SWEETENED CONDENSED MILK (MILK, SUGAR), EVAPORATED MILK, SUGAR, PARTIALLY HYDROGENATED VEGETABLE OIL (COTTONSEED OIL AND/OR SOYBEAN OIL), INVERT SUGAR, BUTTER, NATURAL AND ARTIFICIAL FLAVORS, SALT.
 MANUFACTURED BY THE NEW CHERRYDALE, ALLENTOWN, PA. 18106 USA

NET WEIGHT 6 oz (170 g)



Allergy Information: Manufactured In A Facility That Processes Peanuts/Nuts, Wheat, Milk, And Egg Products. May Contain Traces Of Milk, Egg, Wheat, And/Or Nuts Including Peanuts.



Nutrition Facts

Serving Size 3 pieces (46g)
 Servings Per Container about 3.5

Amount Per Serving

Calories 220 **Calories from Fat 130**

% Daily Value*

Total Fat 14g	22%
Saturated Fat 5g	25%
Trans Fat 0g	
Cholesterol 5mg	2%
Sodium 45mg	2%
Total Carbohydrate 23g	8%
Dietary Fiber 1g	4%
Sugars 15g	

Protein 3g

Vitamin A 2% • Vitamin C 0%

Calcium 8% • Iron 4%

*Percent Daily Values are based on a 2,000 calorie diet. Your daily values may be higher or lower depending on your calorie needs:

		Calories	2,000	2,500
Total Fat	Less Than	65g	80g	
Saturated Fat	Less Than	20g	25g	
Cholesterol	Less Than	300mg	300 mg	
Sodium	Less Than	2,400mg	2,400mg	
Total Carbohydrate		300g	375g	
Dietary Fiber		25g	30g	

Calories per gram:

Fat 9 • Carbohydrate 4 • Protein 4

**PRODUCT INGREDIENT SHEET
CHOCOLATE CHERRIES, SKU 0054**

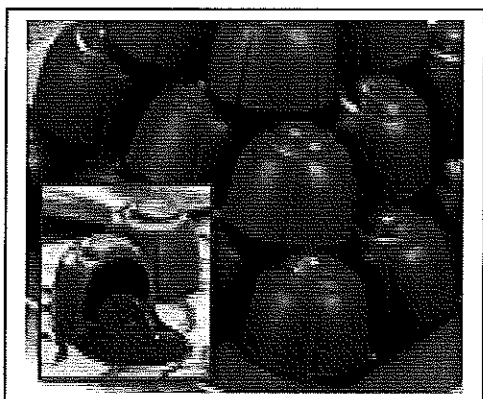
INGREDIENTS: MILK CHOCOLATE (SUGAR, CHOCOLATE, MILK, COCOA BUTTER, SOYA LECITHIN - AN EMULSIFIER, VANILLIN - AN ARTIFICIAL FLAVOR), SUGAR, WATER, MODIFIED CHERRIES (CHERRIES, CORN SYRUP, WATER, HIGH FRUCTOSE CORN SYRUP, CITRIC ACID, ARTIFICIAL FLAVOR, POTASSIUM SORBATE AND SODIUM BENZOATE ADDED AS PRESERVATIVES, FD&C RED # 40, SULPHUR DIOXIDE – A PRESERVATIVE), CORN SYRUP, CITRIC ACID, SODIUM BENZOATE AND POTASSIUM SORBATE – PRESERVATIVES, RED # 40, NATURAL AND ARTIFICIAL FLAVORS.

MANUFACTURED BY THE NEW CHERRYDALE, ALLENTOWN, PA., 18106, USA.

NET WEIGHT 5 oz (142 g)



Allergy Information: Manufactured In A Facility That Processes Peanuts/Nuts, Wheat, Milk, And Egg Products. May Contain Traces Of Milk, Egg, Wheat, And/Or Nuts Including Peanuts.



Nutrition Facts	
Serving Size 3 pieces (43g)	
Servings Per Container about 3.5	
Amount Per Serving	
Calories 170	Calories from Fat 60
% Daily Value*	
Total Fat 7g	11%
Saturated Fat 4g	20%
Trans Fat 0g	
Cholesterol 0mg	0%
Sodium 20mg	1%
Total Carbohydrate 28g	9%
Dietary Fiber 1g	4%
Sugars 22g	
Protein 1g	
Vitamin A 0%	Vitamin C 0%
Calcium 4%	Iron 2%
*Percent Daily Values are based on a 2,000 calorie diet. Your daily values may be higher or lower depending on your calorie needs:	
	Calories 2,000 2,500
Total Fat	Less Than 65g 80g
Saturated Fat	Less Than 20g 25g
Cholesterol	Less Than 300mg 300 mg
Sodium	Less Than 2,400mg 2,400mg
Total Carbohydrate	300g 375g
Dietary Fiber	25g 30g
Calories per gram:	
	Fat 9 • Carbohydrate 4 • Protein 4

**PRODUCT INGREDIENT SHEET
COCONUT DELIGHTS, SKU 0055**

INGREDIENTS: SUGAR, DARK CHOCOLATE (SUGAR, CHOCOLATE [PROCESSED WITH ALKALI], COCOA BUTTER, MILK FAT, SOYA LECITHIN-AN EMULSIFIER, VANILLIN-AN ARTIFICIAL FLAVOR), COCONUT (SODIUM METABISULFITE ADDED AS A PRESERVATIVE), WATER, PARTIALLY HYDROGENATED VEGETABLE OIL (COTTONSEED AND SOYBEAN OIL), INVERT SUGAR, CORN SYRUP, EGG WHITES, COCOA, COCOA PROCESSED WITH ALKALI, INVERTASE, SOYA LECITHIN – AN EMULSIFIER, SALT, NATURAL AND ARTIFICIAL FLAVORS, POTATO STARCH, CORN STARCH, WHEAT STARCH, MONO AND DIGLYCERIDES – AN EMULSIFIER, SODIUM BENZOATE – A PRESERVATIVE, POTASSIUM SORBATE – A PRESERVATIVE.

MANUFACTURED BY THE NEW CHERRYDALE, ALLENTOWN, PA. 18106 USA

NET WEIGHT 6 oz (170 g)



Allergy Information: Manufactured In A Facility That Processes Peanuts/Nuts, Wheat, Milk, And Egg Products. May Contain Traces Of Milk, Egg, Wheat, And/Or Nuts Including Peanuts.



Nutrition Facts

Serving Size 3 pieces (43g)
Servings Per Container 4

Amount Per Serving

Calories 200 **Calories from Fat 80**

% Daily Value*

Total Fat 9g **14%**

 Saturated Fat 3g **15%**

 Trans Fat 0g

Cholesterol 0mg **0%**

Sodium 15mg **1%**

Total Carbohydrate 30g **10%**

 Dietary Fiber 2g **8%**

 Sugars 27g

Protein 1g

Vitamin A 0% • Vitamin C 0%

Calcium 0% • Iron 6%

*Percent Daily Values are based on a 2,000 calorie diet. Your daily values may be higher or lower depending on your calorie needs:

	Calories	2,000	2,500
Total Fat	Less Than	65g	80g
Saturated Fat	Less Than	20g	25g
Cholesterol	Less Than	300mg	300 mg
Sodium	Less Than	2,400mg	2,400mg
Total Carbohydrate		300g	375g
Dietary Fiber		25g	30g

Calories per gram:

Fat 9 • Carbohydrate 4 • Protein 4

**PRODUCT INGREDIENT SHEET
COLONIAL CRISPS, SKU 0056**

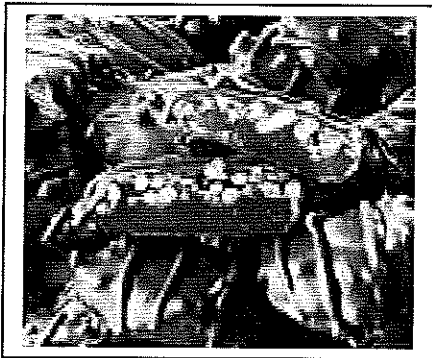
INGREDIENTS: MILK CHOCOLATE (SUGAR, MILK, CHOCOLATE, COCOA BUTTER, SOYA LECITHIN AN EMULSIFIER, VANILLIN AN ARTIFICIAL FLAVOR), CORN SYRUP, SWEETENED CONDENSED MILK (MILK, SUGAR), EVAPORATED MILK, SUGAR, PARTIALLY HYDROGENATED VEGETABLE OIL (COTTONSEED OIL AND/OR SOYBEAN OIL), CRISP RICE (RICE, SUGAR, SALT, MALT), INVERT SUGAR, BUTTER, SALT, NATURAL AND ARTIFICIAL FLAVORS.

MANUFACTURED BY THE NEW CHERRYDALE, ALLENTOWN, PA. 18106 USA

NET WEIGHT 5 oz (142 g)



Allergy Information: Manufactured In A Facility That Processes Peanuts/Nuts, Wheat, Milk, And Egg Products. May Contain Traces Of Milk, Egg, Wheat, And/Or Nuts Including Peanuts.



Nutrition Facts

Serving Size 3 pieces (39g)
Servings Per Container about 3.5

Amount Per Serving

Calories 160 **Calories from Fat 60**

% Daily Value*

Total Fat 7g **11%**

 Saturated Fat 4g **20%**

 Trans Fat 0g

Cholesterol 5mg **2%**

Sodium 70mg **3%**

Total Carbohydrate 24g **8%**

 Dietary Fiber 1g **4%**

 Sugars 14g

Protein 2g

Vitamin A 2% • Vitamin C 0%

Calcium 6% • Iron 2%

*Percent Daily Values are based on a 2,000 calorie diet. Your daily values may be higher or lower depending on your calorie needs:

	Calories	2,000	2,500
Total Fat	Less Than	65g	80g
Saturated Fat	Less Than	20g	25g
Cholesterol	Less Than	300mg	300 mg
Sodium	Less Than	2,400mg	2,400mg
Total Carbohydrate		300g	375g
Dietary Fiber		25g	30g

Calories per gram:
Fat 9 • Carbohydrate 4 • Protein 4

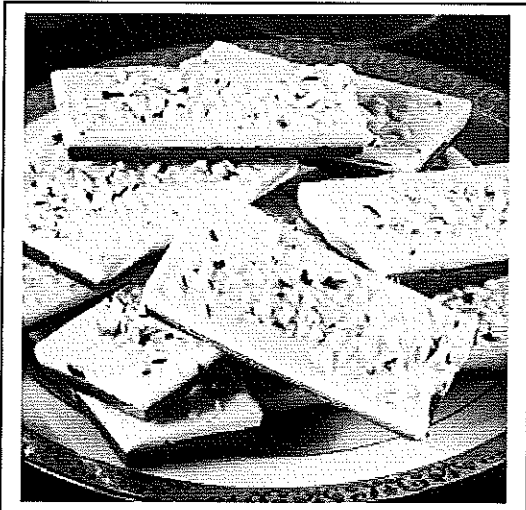
**PRODUCT INGREDIENT SHEET
PEPPERMINT BARK, SKU 6718**

INGREDIENTS: DARK CHOCOLATE (SUGAR, CHOCOLATE [PROCESSED WITH ALKALI], COCOA BUTTER, MILK FAT, SOYA LECITHIN-AN EMULSIFIER, VANILLIN-AN ARTIFICIAL FLAVOR), SUGAR, PARTIALLY HYDROGENATED VEGETABLE OIL (PALM KERNEL, COCONUT, AND/OR PALM OIL), CORN SYRUP, NONFAT MILK POWDER, TOASTED COCONUT (SODIUM METABISULFITE ADDED AS A PRESERVATIVE), SOYA LECITHIN-AN EMULSIFIER, MONOGLYCERIDES-AN EMULSIFIER, NATURAL AND ARTIFICIAL FLAVOR, OIL OF PEPPERMINT, FD&C RED #40, RED #40 LAKE, RED #3, BLUE #1.
MANUFACTURED BY THE NEW CHERRYDALE, ALLENTOWN, PA 18106 USA

NET WEIGHT 8 oz (227 g)



Allergy Information: Manufactured In A Facility That Processes Peanuts/Nuts, Wheat, Milk, And Egg Products. May Contain Traces Of Milk, Egg, Wheat, And/Or Nuts Including Peanuts.



Nutrition Facts

Serving Size 1/3 bar (38g)
Servings Per Container 6

Amount Per Serving

Calories 190 **Calories from Fat 100**

% Daily Value*

Total Fat 11g **17%**

Saturated Fat 9g **45%**

Trans Fat 0g

Cholesterol 0mg **0%**

Sodium 30mg **1%**

Total Carbohydrate 24g **8%**

Dietary Fiber 1g **4%**

Sugars 22g

Protein 2g

Vitamin A 0% • **Vitamin C 0%**

Calcium 4% • **Iron 6%**

*Percent Daily Values are based on a 2,000 calorie diet. Your daily values may be higher or lower depending on your calorie needs:

		Calories	2,000	2,500
Total Fat	Less Than	65g	80g	
Saturated Fat	Less Than	20g	25g	
Cholesterol	Less Than	300mg	300 mg	
Sodium	Less Than	2,400mg	2,400mg	
Total Carbohydrate		300g	375g	
Dietary Fiber		25g	30g	

Calories per gram:

Fat 9 • Carbohydrate 4 • Protein 4

**PRODUCT INGREDIENT SHEET
WHITE COVERED PRETZELS, SKU 6781**

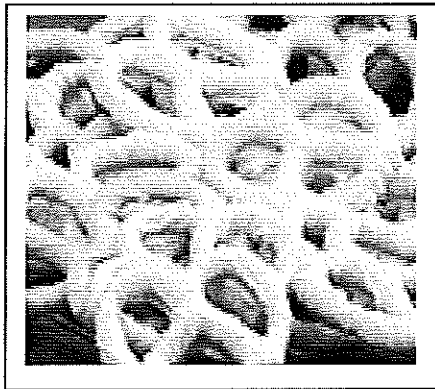
INGREDIENTS: WHITE COATING (SUGAR, FRACTIONATED PALM KERNEL OIL, WHEY POWDER, NON FAT MILK POWDER, SOYA LECITHIN ADDED AS AN EMULSIFIER, MONOGLYCERIDES, AND ARTIFICIAL AND NATURAL FLAVORS), WHEAT FLOUR, SALT, VEGETABLE OIL (SUNFLOWER, CANOLA, AND/OR RICE), CORN SYRUP, MALT SYRUP, YEAST.

MANUFACTURED BY THE NEW CHERRYDALE, ALLENTOWN, PA. 18106 USA

NET WEIGHT 8 oz (227 g)



Allergy Information: Manufactured In A Facility That Processes Peanuts/Nuts, Wheat, Milk, And Egg Products. May Contain Traces Of Milk, Egg, Wheat, And/Or Nuts Including Peanuts.



Nutrition Facts

Serving Size 3 pretzels (45g)
Servings Per Container 5

Amount Per Serving

Calories 200 **Calories from Fat 50**

% Daily Value*

Total Fat 6g	9%
Saturated Fat 4.5g	23%
Trans Fat 0g	
Cholesterol 0mg	0%
Sodium 430mg	18%
Total Carbohydrate 33g	11%
Dietary Fiber 1g	4%
Sugars 10g	

Protein 4g

Vitamin A 0% • Vitamin C 0%
Calcium 2% • Iron 4%

*Percent Daily Values are based on a 2,000 calorie diet. Your daily values may be higher or lower depending on your calorie needs:

	Calories	2,000	2,500
Total Fat	Less Than	65g	80g
Saturated Fat	Less Than	20g	25g
Cholesterol	Less Than	300mg	300 mg
Sodium	Less Than	2,400mg	2,400mg
Total Carbohydrate		300g	375g
Dietary Fiber		25g	30g

Calories per gram:
Fat 9 • Carbohydrate 4 • Protein 4

PRODUCT INGREDIENT SHEET
MILK CHOCOLATE COVERED PRETZELS, SKU 6787

INGREDIENTS: MILK CHOCOLATE (SUGAR, MILK, CHOCOLATE, COCOA BUTTER, SOYA LECITHIN-AN EMULSIFIER, VANILLIN-AN ARTIFICIAL FLAVOR), WHEAT FLOUR, SALT, VEGETABLE OIL (SUNFLOWER, CANOLA, AND/OR RICE), CORN SYRUP, MALT SYRUP, YEAST.

MANUFACTURED BY THE NEW CHERRYDALE, ALLENTOWN, PA. 18106 USA

NET WEIGHT 8 oz (227 g)



Allergy Information: Manufactured In A Facility That Processes Peanuts/Nuts, Wheat, Milk, And Egg Products. May Contain Traces Of Milk, Egg, Wheat, And/Or Nuts Including Peanuts.



Nutrition Facts

Serving Size 3 pretzels (45g)
 Servings Per Container 5

Amount Per Serving

Calories 190 **Calories from Fat 50**

% Daily Value*

Total Fat 6g **9%**

 Saturated Fat 2.5g **13%**

 Trans Fat 0g

Cholesterol 5mg **2%**

Sodium 420mg **18%**

Total Carbohydrate 33g **11%**

 Dietary Fiber 1g **4%**

 Sugars 9g

Protein 4g

Vitamin A 0% • Vitamin C 0%

Calcium 4% • Iron 6%

*Percent Daily Values are based on a 2,000 calorie diet. Your daily values may be higher or lower depending on your calorie needs:

		Calories	2,000	2,500
Total Fat	Less Than	65g	80g	
Saturated Fat	Less Than	20g	25g	
Cholesterol	Less Than	300mg	300 mg	
Sodium	Less Than	2,400mg	2,400mg	
Total Carbohydrate		300g	375g	
Dietary Fiber		25g	30g	

Calories per gram:
 Fat 9 • Carbohydrate 4 • Protein 4

**PRODUCT INGREDIENT SHEET
CARAMONDS, SKU 6788**

INGREDIENTS: MILK CHOCOLATE (SUGAR, MILK, CHOCOLATE, COCOA BUTTER, SOYA LECITHIN AN EMULSIFIER, VANILLIN AN ARTIFICIAL FLAVOR), ALMONDS, CORN SYRUP, SWEETENED CONDENSED MILK (MILK, SUGAR), EVAPORATED MILK, SUGAR, PARTIALLY HYDROGENATED VEGETABLE OIL (COTTONSEED OIL AND/OR SOYBEAN OIL), INVERT SUGAR, BUTTER, SALT, NATURAL AND ARTIFICIAL FLAVORS.
MANUFACTURED BY THE NEW CHERRYDALE, ALLENTOWN, PA. 18106 USA

NET WEIGHT 8.5 oz (241g)



Allergy Information: Manufactured In A Facility That Processes Peanuts/Nuts, Wheat, Milk, And Egg Products. May Contain Traces Of Milk, Egg, Wheat, And/Or Nuts Including Peanuts.



Nutrition Facts

Serving Size 1 Piece (27g)
Servings Per Container 9

Amount Per Serving

Calories 120 **Calories from Fat 70**

% Daily Value*

Total Fat 7g **11%**

 Saturated Fat 2.5g **13%**

 Trans Fat 0g

Cholesterol 5mg **2%**

Sodium 25mg **1%**

Total Carbohydrate 14g **5%**

 Dietary Fiber 1g **4%**

 Sugars 8g

Protein 3g

Vitamin A 0% • Vitamin C 0%

Calcium 6% • Iron 4%

*Percent Daily Values are based on a 2,000 calorie diet. Your daily values may be higher or lower depending on your calorie needs:

	Calories	2,000	2,500
Total Fat	Less Than	65g	80g
Saturated Fat	Less Than	20g	25g
Cholesterol	Less Than	300mg	300 mg
Sodium	Less Than	2,400mg	2,400mg
Total Carbohydrate		300g	375g
Dietary Fiber		25g	30g

Calories per gram:

Fat 9 • Carbohydrate 4 • Protein 4

**PRODUCT INGREDIENT SHEET
CHOCOLATE RASPBERRY JELLIES, SKU 6929**

INGREDIENTS: DARK CHOCOLATE (SUGAR, CHOCOLATE [PROCESSED WITH ALKALI], COCOA BUTTER, MILK FAT, SOYA LECITHIN-AN EMULSIFIER, VANILLIN-AN ARTIFICIAL FLAVOR), SUGAR, CORN SYRUP, HIGH FRUCTOSE CORN SYRUP, RASPBERRIES, WATER, PARTIALLY HYDROGENATED SOYBEAN AND COTTONSEED OIL, INVERT SUGAR, COCOA, COCOA – PROCESSED WITH ALKALI, PECTIN, CITRIC ACID, DEXTROSE, NATURAL AND ARTIFICIAL FLAVORS, SOYA LECITHIN – AN EMULSIFIER, SALT, CORN STARCH, SODIUM CITRATE, POLYDIMETHYLSILOXANE (ANTI FOAM AGENT).

MANUFACTURED BY THE NEW CHERRYDALE, ALLENTOWN, PA. 18106 USA

NET WEIGHT 9 oz (255 g)



Allergy Information: Manufactured In A Facility That Processes Peanuts/Nuts, Wheat, Milk, And Egg Products. May Contain Traces Of Milk, Egg, Wheat, And/Or Nuts Including Peanuts.



Nutrition Facts	
Serving Size 3 pieces (35g)	
Servings Per Container about 7	
Amount Per Serving	
Calories 120	Calories from Fat 35
% Daily Value*	
Total Fat 4g	6%
Saturated Fat 2.5g	13%
Trans Fat 0g	
Cholesterol 0mg	0%
Sodium 5mg	0%
Total Carbohydrate 23g	8%
Dietary Fiber 1g	4%
Sugars 18g	
Protein 1g	
Vitamin A 0%	Vitamin C 0%
Calcium 0%	Iron 4%
*Percent Daily Values are based on a 2,000 calorie diet. Your daily values may be higher or lower depending on your calorie needs:	
	Calories 2,000 2,500
Total Fat	Less Than 65g 80g
Saturated Fat	Less Than 20g 25g
Cholesterol	Less Than 300mg 300 mg
Sodium	Less Than 2,400mg 2,400mg
Total Carbohydrate	300g 375g
Dietary Fiber	25g 30g
Calories per gram:	
Fat 9 • Carbohydrate 4 • Protein 4	

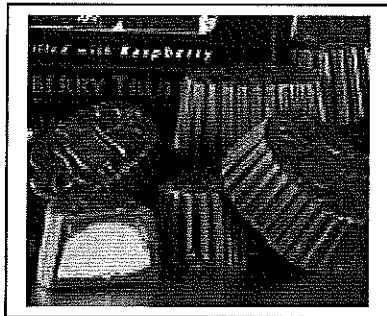
PRODUCT INGREDIENT SHEET
DARK CHOCOLATE RASPBERRY TRUFFLE, SKU 9378
(Blommer Lafayette Dark)

INGREDIENTS: DARK CHOCOLATE (SUGAR, CHOCOLATE PROCESSED WITH ALKALI, COCOA BUTTER, MILK FAT, SOYA LECITHIN - AN EMULSIFIER, VANILLA AND VANILLIN - AN ARTIFICIAL FLAVOR), FONDANT (SUGAR, INVERT SUGAR), WHITE CONFECTIONERY COATING (SUGAR, PARTIALLY HYDROGENATED PALM KERNEL OIL, NONFAT MILK POWDER, SOY LECITHIN - AN EMULSIFIER, MONOGLYCERIDES, ARTIFICIAL FLAVOR), CORN SYRUP, SORBITOL, PALM KERNEL OIL, FREEZE DRIED RASPBERRY POWDER, HIGH FRUCTOSE CORN SYRUP, POTASSIUM SORBATE A PRESERVATIVE, CITRIC ACID.
 MANUFACTURED BY BARTONS CONFECTIONERS™, ALLENTOWN, PA. 18106 USA

NET WEIGHT 5 oz (142g)



Allergy Information: Manufactured In A Facility That Processes Peanuts/Nuts, Wheat, Milk, And Egg Products. May Contain Traces Of Milk, Egg, Wheat, And/Or Nuts Including Peanuts.



Nutrition Facts			
Serving Size 3 pieces (36g)			
Servings Per Container about 4			
Amount Per Serving			
Calories 160	Calories from Fat 80		
<small>% Daily Value*</small>			
Total Fat 9g	14%		
Saturated Fat 6g	30%		
Trans Fat 0g			
Cholesterol 0mg	0%		
Sodium 5mg	0%		
Total Carbohydrate 23g	8%		
Dietary Fiber 1g	4%		
Sugars 19g			
Protein 1g			
Vitamin A 2%	• Vitamin C 2%		
Calcium 2%	• Iron 6%		
<small>*Percent Daily Values are based on a 2,000 calorie diet. Your daily values may be higher or lower depending on your calorie needs:</small>			
	<small>Calories</small>	<small>2,000</small>	<small>2,500</small>
Total Fat	Less Than	65g	80g
Saturated Fat	Less Than	20g	25g
Cholesterol	Less Than	300mg	300 mg
Sodium	Less Than	2,400mg	2,400mg
Total Carbohydrate		300g	375g
Dietary Fiber		25g	30g
Calories per gram:			
Fat 9 • Carbohydrate 4 • Protein 4			

